

Wyse Thin OS/Xenith & Citrix HDX Flash Optimizations

September 6th 2013

***A Free Technicalhelp White Paper
www.technicalhelp.de***

Inhaltsverzeichnis

Summary3

Audience3

Related Products3

Which HDX functions are implemented in Wyse Thin OS/Xenith?3

Which HDX functions are not implemented in Wyse Thin OS/Xenith?3

Important for HDX MediaStream for Flash Server Rendering5

How to optimize Citrix HDX MediaStream for Flash5

Parameters for the WNOS.INI for Citrix HDX.....9

Summary

This note describes the recommended configuration for getting the best user experience in playing flash videos in a HDX environment with Wyse Thin OS based clients.

Audience

Administrators and System Engineers

Related Products

Wyse Thin OS based clients
Citrix XenApp 5 or higher
Citrix XenDesktop 5 or higher

Which HDX functions are implemented in Wyse Thin OS/Xenith?

HDX Ready client ICA 12 Compatible	<ul style="list-style-type: none">- UDP Audio- Improved media flow control- HDX Plug-n-Play- Flash (server rendered)- Progressive Display- HDX IntelliCache- Session Reliability- Access Gateway Support (direct LDAP or RSA authentication)- Support for L-shaped desktop (and other rotated monitor set up)- Granular control on HDX USB redirected devices	<ul style="list-style-type: none">- User roaming- HDX Mediasream- HDX Realtime- HDX Broadcast (Branch Repeater)- Seamless Windows- Desktop Restart (XenDesktop)- Smartcard authentication and redirection
---------------------------------------	--	---

Which HDX functions are not implemented in Wyse Thin OS/Xenith?

- **Citrix HDX 3D Pro**
- **Citrix HDX MediaStream for Flash *Client Rendering***

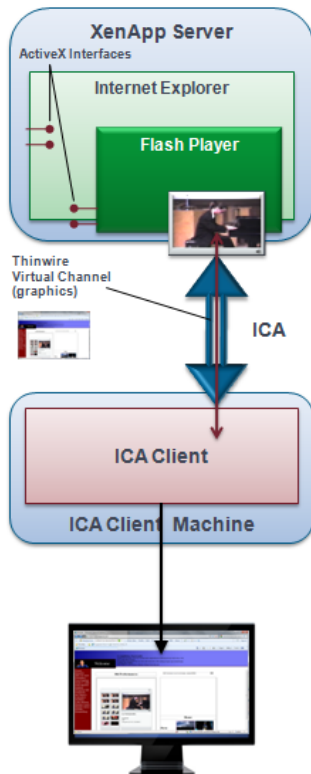
With this extension, Citrix uses the Adobe Flash Player on the client system to playback the flash content.

Wyse Thin OS/Xenith does not currently support this as there is no local flash player available. Therefore this extension cannot be used.

As an alternative you can use Citrix HDX MediaStream for Flash Server Rendering

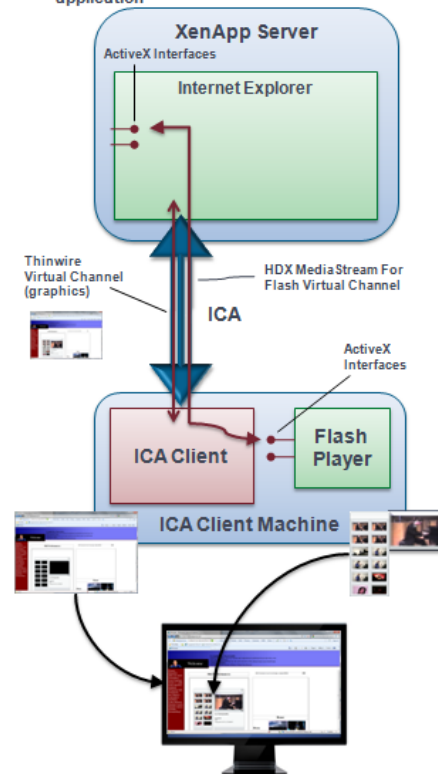
Server Rendering

Without HDX MediaStream For Flash – The Flash Video is rendered on the server and remoted over thinwire



Client Rendering

With HDX MediaStream For Flash – The Flash Video is rendered on the client device and composed with the server desktop or application



Important for HDX MediaStream for Flash Server Rendering

HDX MediaStream for Flash Server Rendering does not support full screen playback of flash content. If the user is selecting full screen, the display will not be accelerated at all.

To avoid unnecessary frustration from the user, we recommend disabling the full screen functionality in the Adobe flash player settings:

- Create a file called mms.cfg and add this line:

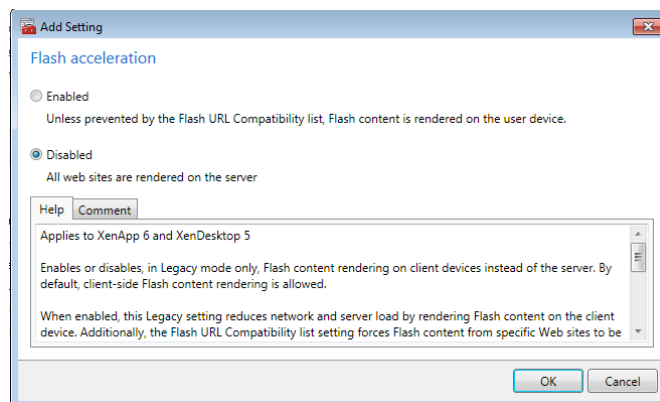
FullscreenDisable = 1
- Place this file either in
C:\Windows\System32\Macromed\Flash (or
C:\Windows\SysWOW64\Macromed\Flash on a Windows x64 installation).

Access to full screen playback will then be blocked for all users.

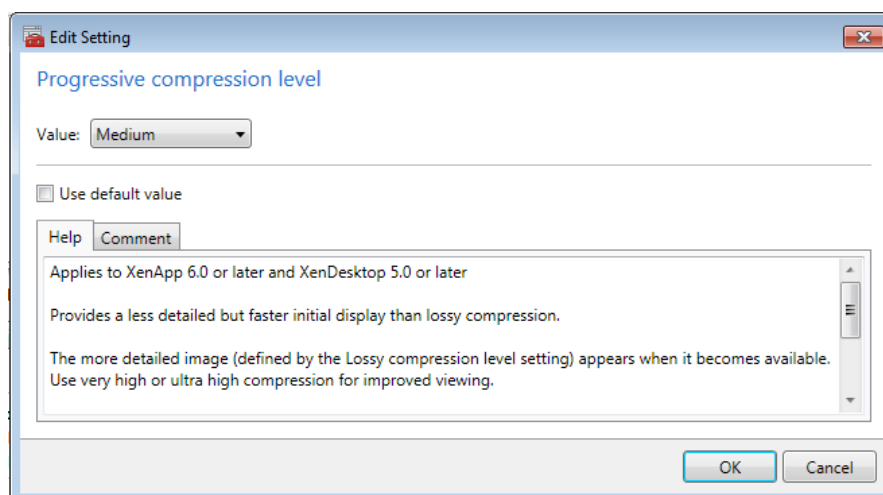
How to optimize Citrix HDX MediaStream for Flash

Recent versions of Citrix XenApp or XenDesktop switch automatically to the server site rendering method if client site rendering is not available.

If necessary, an administrator may choose to use only the method Rendering Server by setting the Citrix server policy "Flash Acceleration":



When server site rendering is used, you can adjust the parameter « Progressive compression level » so that Progressive Display is used. This turns out to be very effective in improving fluent displaying of server rendered multimedia and this also saves a good amount of bandwidth. The recommended value for a LAN environment is Medium. For a WAN environment it depends on the available bandwidth and latency.



In XenDesktop 5.5 and XenApp 6.5 Citrix has made enhancements to Progressive Display, which is called now Adaptive Display. For XenDesktop 5.5 Adaptive Display is enabled by default and can only be altered through the Citrix policies. For XenApp 6.5 you will need to add a Citrix hotfix to enable Adaptive Display. On XenApp 6.5 Adaptive Display is NOT enabled by default and the settings can only be altered through MS Group Policies (so not through the Citrix Policies). The patch that needs to be installed on XenApp 6.5 can be found at <http://support.citrix.com/article/CTX130971>

These settings below gave us the best results.

Citrix Group Policy	
Groups and Settings	
Display	
Allow: Checks that the user is STGH\Domain Users	
Setting	Value
Moving Image Compression	Enabled
Target Minimum Frame Rate	10
Minimum Image Quality	Normal
Progressive compression level	None
Max Frames Per Second	15
Unfiltered	

In addition to this hotfix, Citrix has released a second one that improves Flash performance significantly. You can download it here <http://support.citrix.com/article/CTX134426>

Make sure, in case you install CTX134426 that you also edit the, in the HF description mentioned registry key, if you want to use Internet Explorer 9 or 10.

•For a 32-bit operating system:

HKEY_LOCAL_MACHINE\SOFTWARE\Citrix\HdxMediaStreamForFlash\Server\PseudoServer

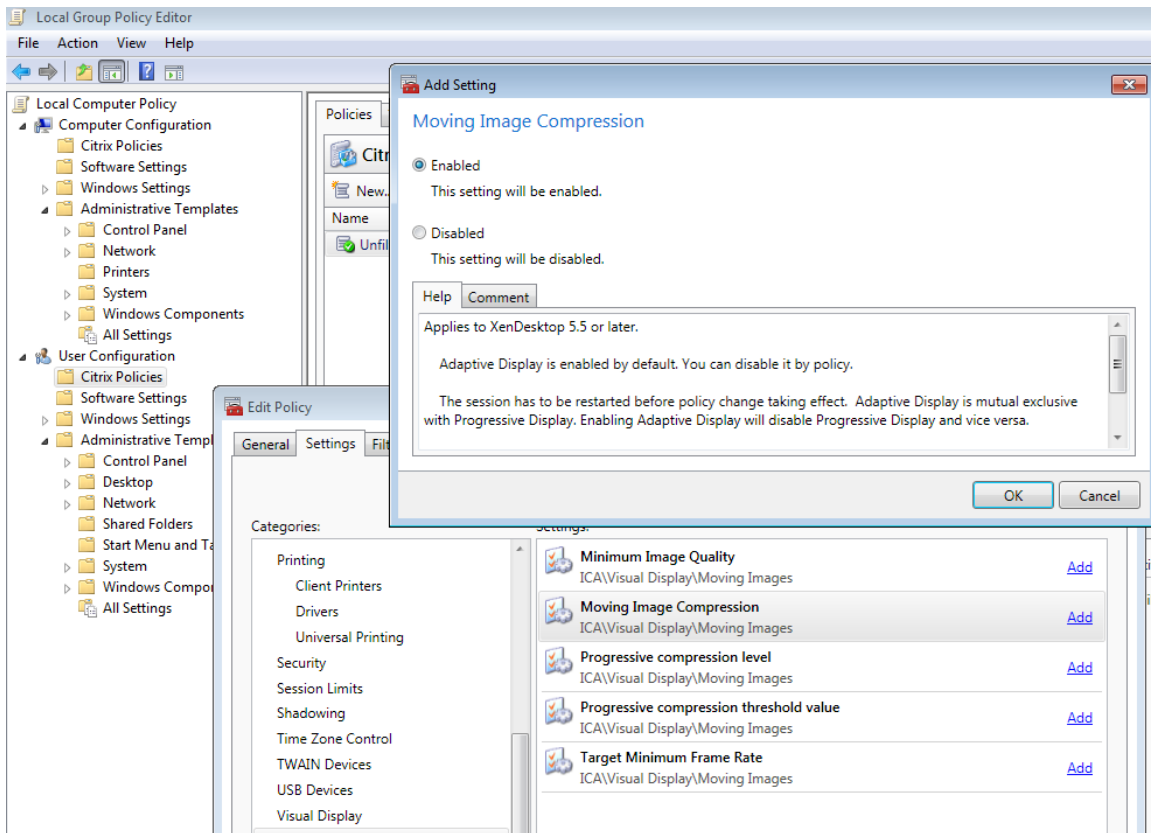
Add the entry named IEBrowserMaximumMajorVersion with a DWORD value = 00000009, if you are using IE9. For IE 10 use value = 00000010.

•For a 64-bit operating system

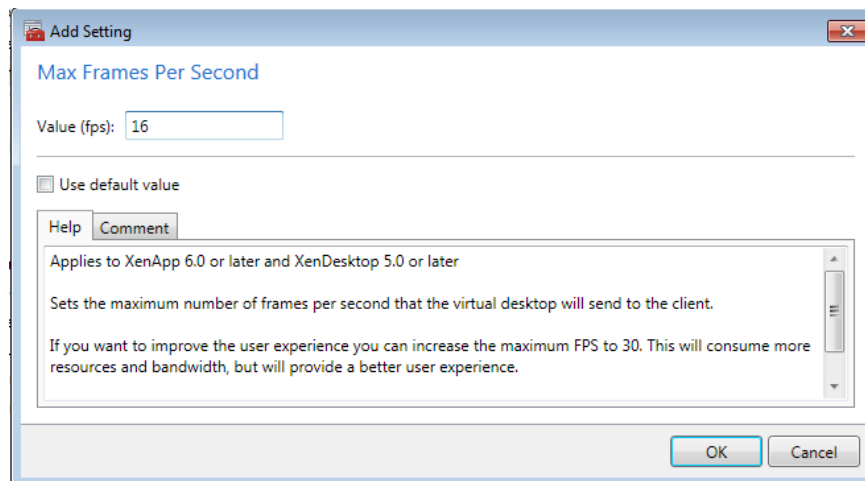
HKEY_LOCAL_MACHINE\SOFTWARE\Wow6432Node\Citrix\HdxMediaStreamForFlash\Server\PseudoServer

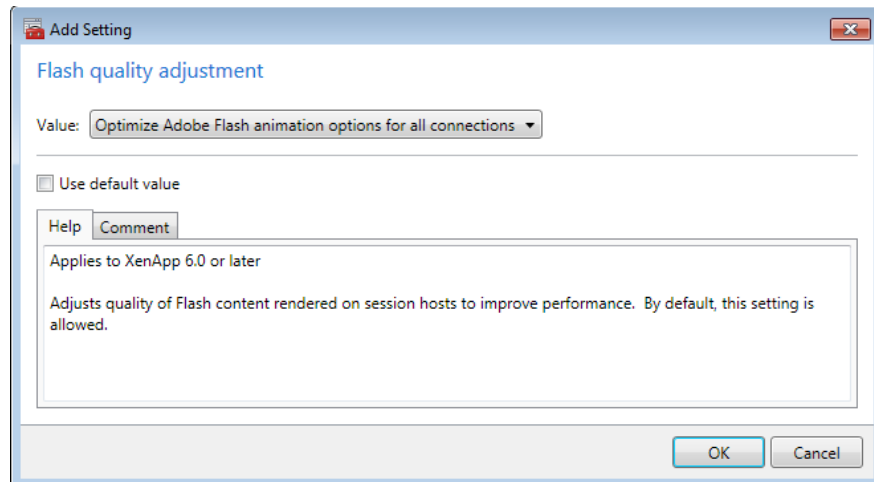
Add the entry named IEBrowserMaximumMajorVersion with a DWORD value = 00000009, if you are using IE9. For IE 10 use value = 00000010.

NOTE: Internal and customer testing have shown that server-rendered Flash content gives a much better user experience when using Internet Explorer 10 on the XenApp server instead of version 8 or 9.



Other settings that are also very helpful are:





Parameters for the WNOS.INI for Citrix HDX

By default, certain extensions are disabled in Citrix HDX WTOS/Xenith.

To use these extensions, you must include the appropriate settings in the file wnos.ini.

HDX MediaStream

SessionConfig=ICA ProgressiveDisplay=yes

EnableRAVE=yes

NOTE : Video content redirection only works with a DirectShow compatible video player, Windows Media Player is most commonly used.